

Using PictureWeb

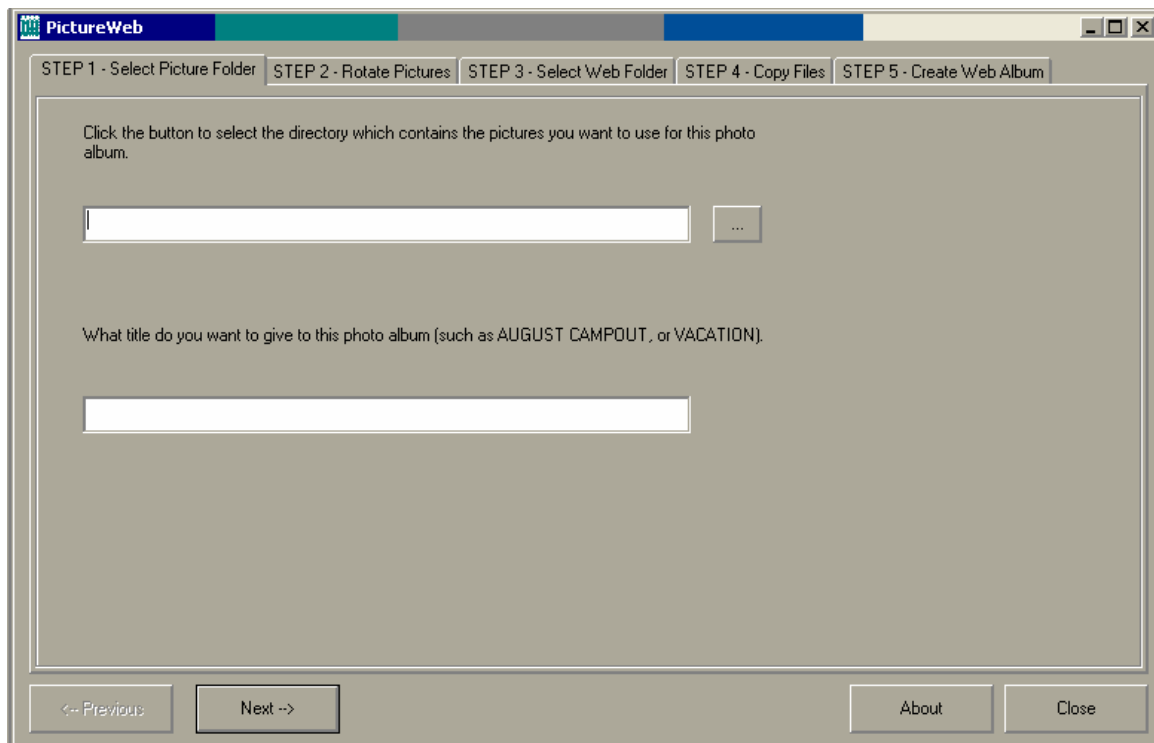
Creating web photo albums involves these steps:

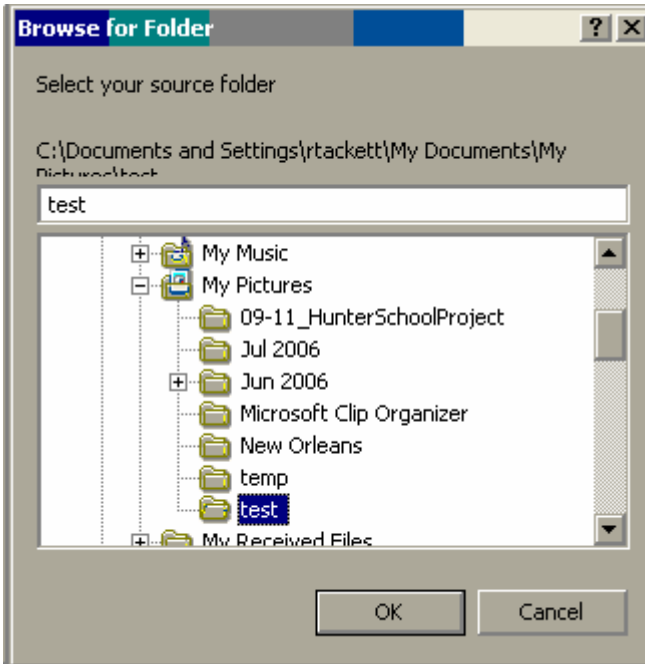
1. Select the folder containing the original pictures
2. Rotate (or indicating rotated) pictures
3. Select where you want the photo album created
4. Copy the pictures to the new web photo album folder structure
5. Create the album

NOTE: Photos within each individual web photo album created by PictureWeb must have the same aspect ratio (width vs. height). Separate photo albums created by PictureWeb, however, can have differing photo aspect ratios.

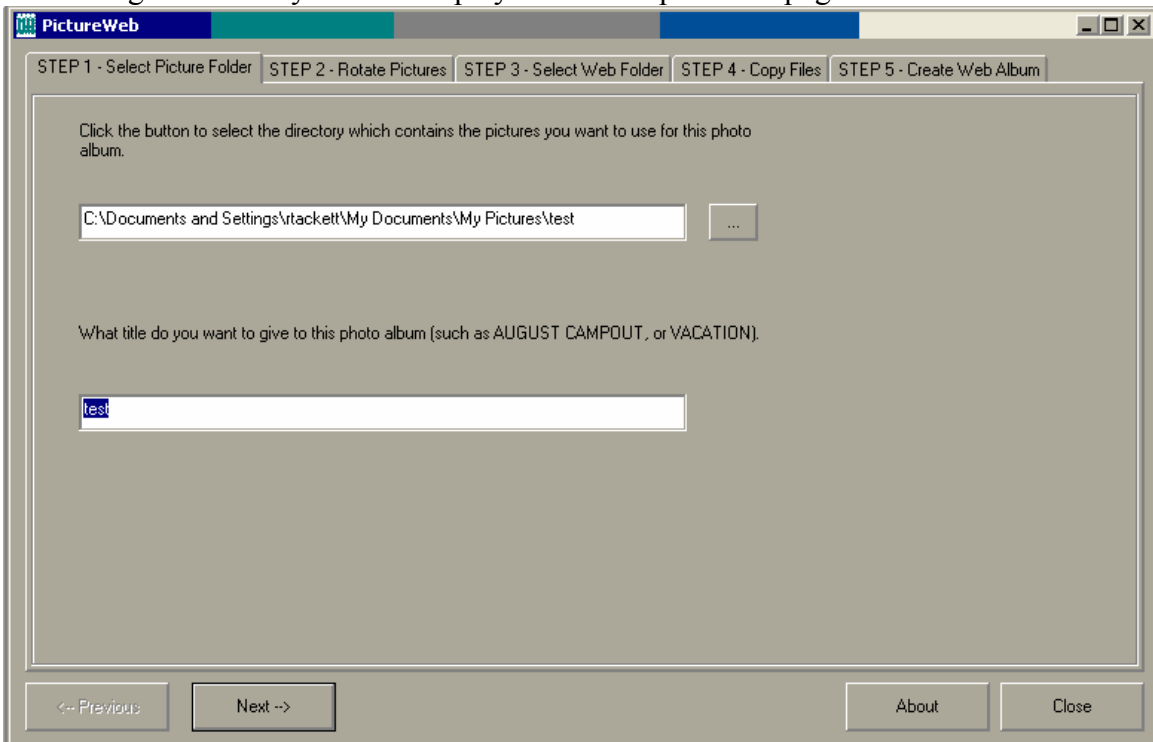
1. Selecting the folder containing the original pictures

- 1.1. Click the Ellipses button (...) to select the folder which contains the pictures you want to turn into a web photo album





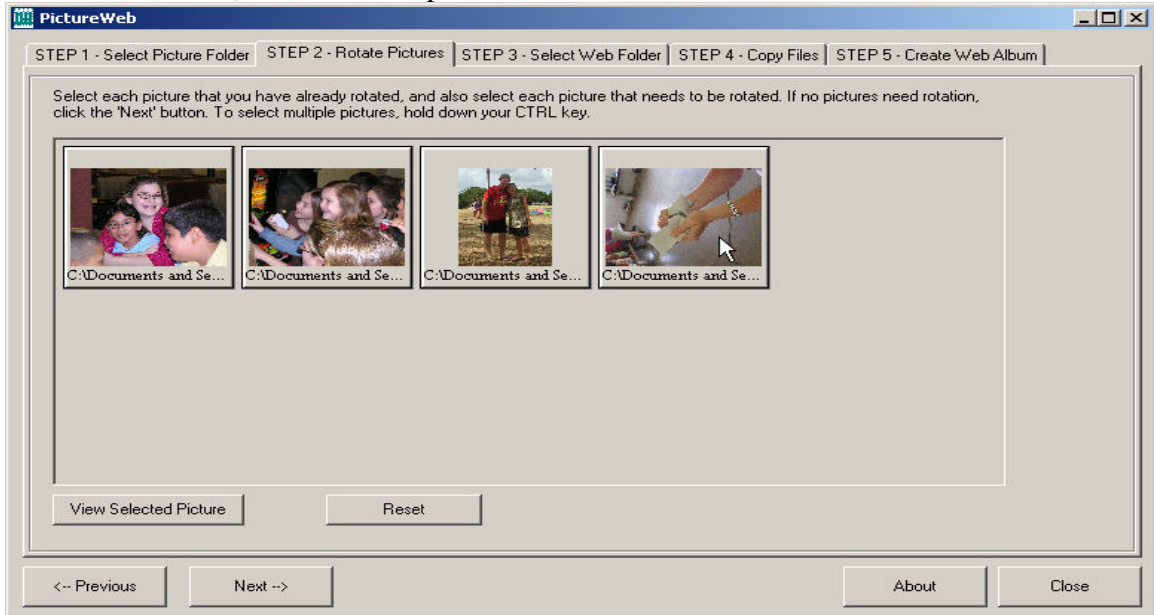
1.2. Change the name you want displayed on the top of each page



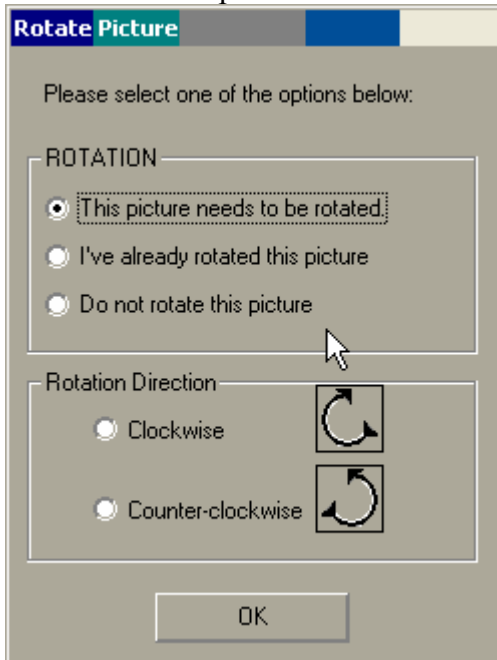
1.3. Click Next

2. Rotating (or indicating rotated) pictures

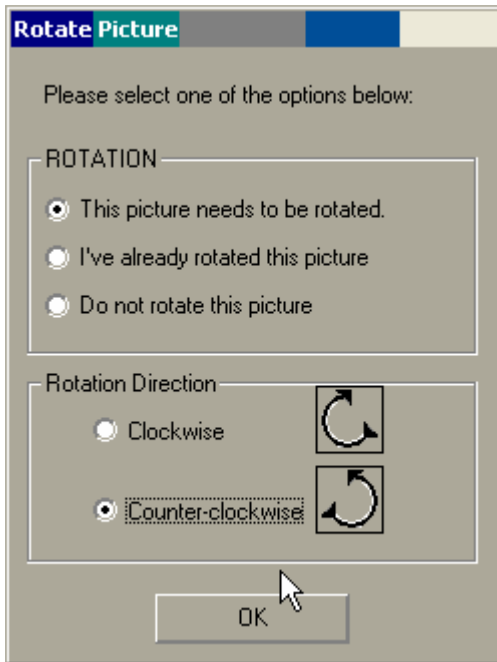
2.1. One at a time, click on each picture that needs rotated.



2.2. Click “This picture needs to be rotated”



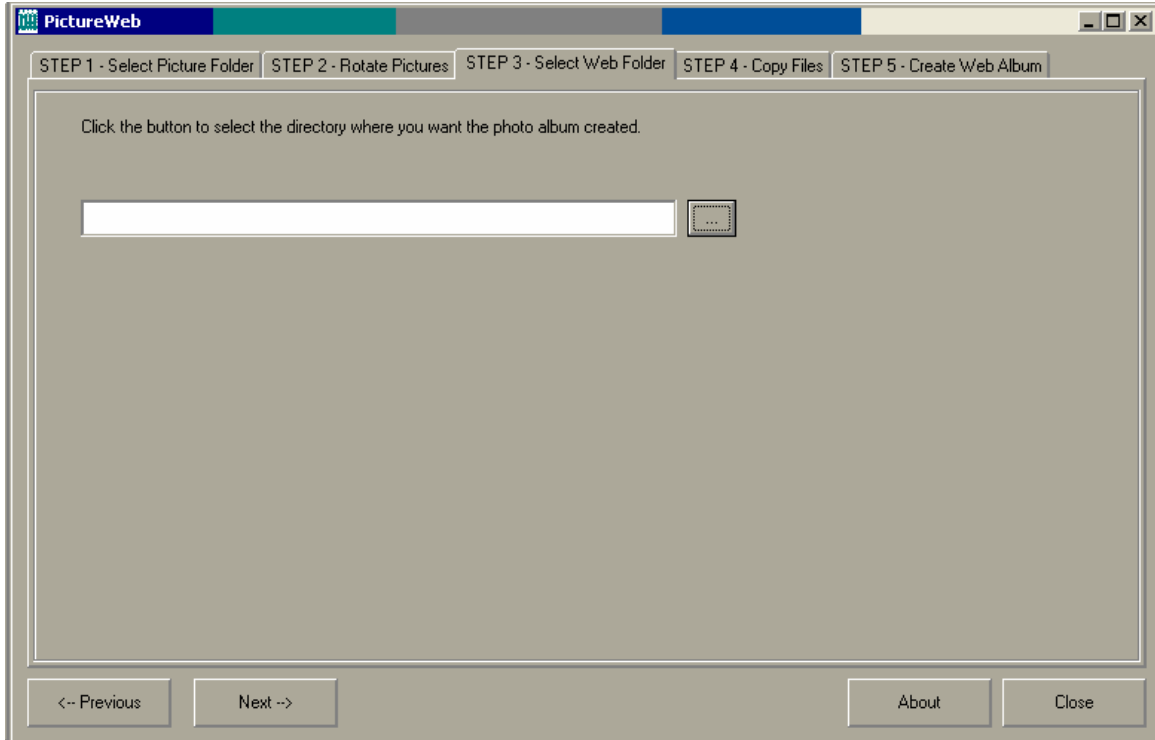
2.3. Indicate the direction of the needed rotation, then click OK



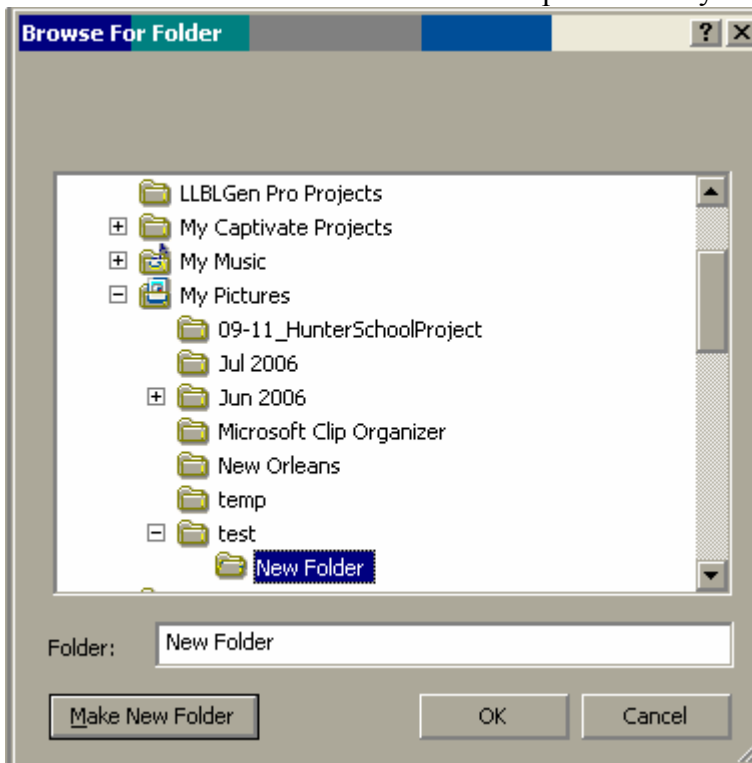
2.4. Repeat these rotation steps for every picture needing rotation, and also to indicate any pictures you have already rotated. Picture web uses this information to determine whether or not to display the thumbnails and smaller pictures in portrait or landscape mode.

3. Selecting where you want the photo album created

3.1. Click Next. You should now see the STEP 3 tab



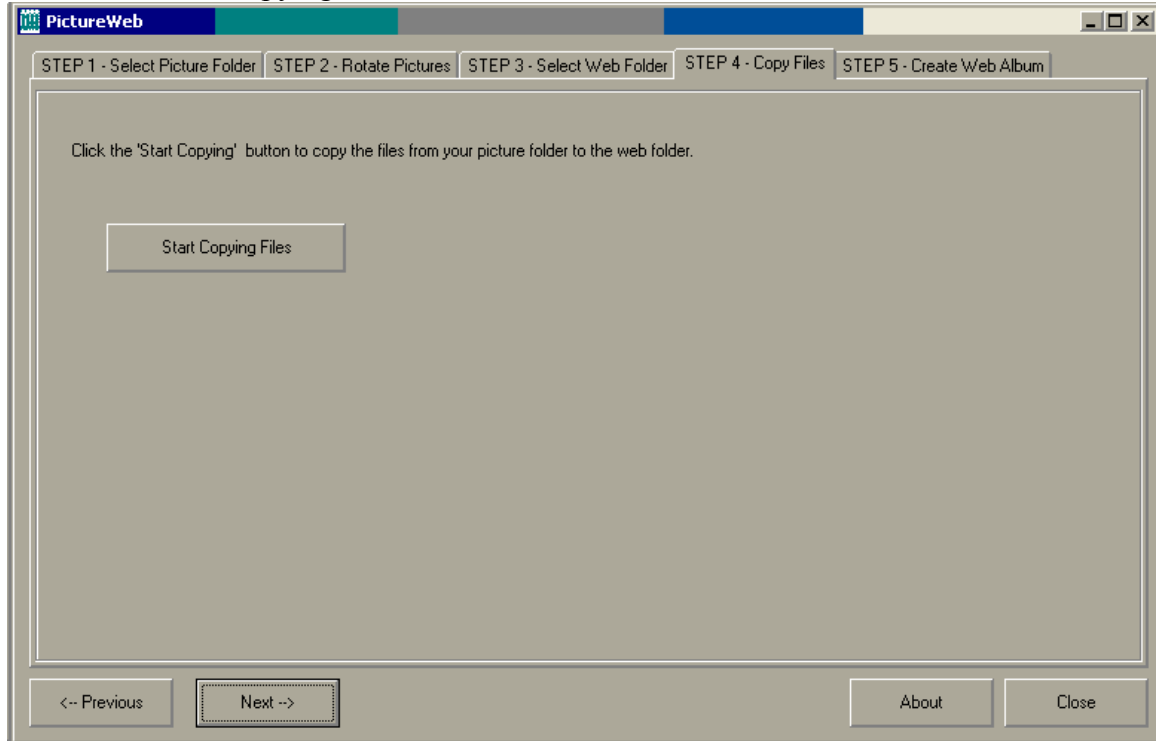
3.2. Click the Ellipses button and select the new folder where you want the web photo album created. Pick a folder that is separate from your original picture folder.



3.3. Click Next

4. Copying the pictures to the new web photo album folder structure

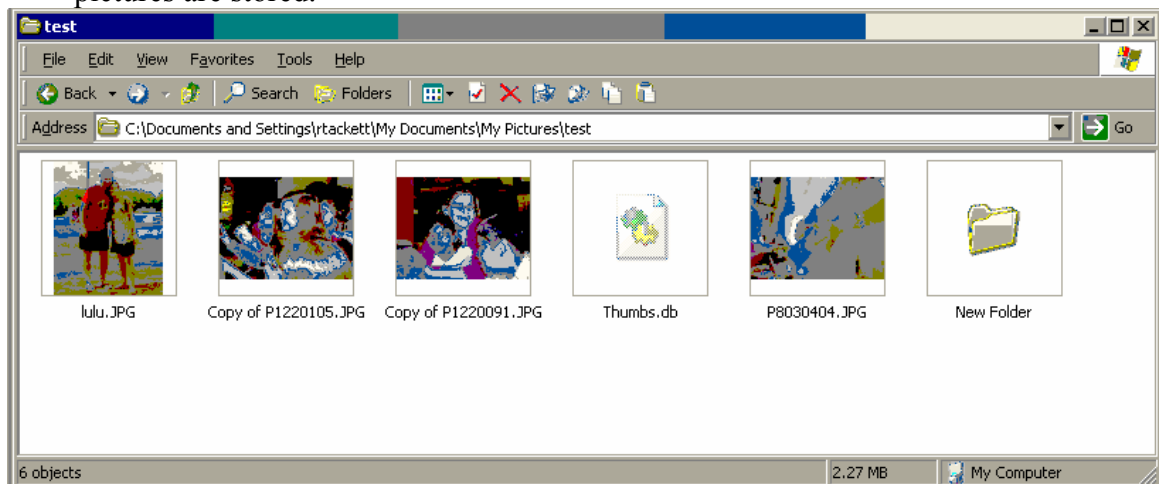
4.1. Click “Start Copying Files” button



5. Creating the album

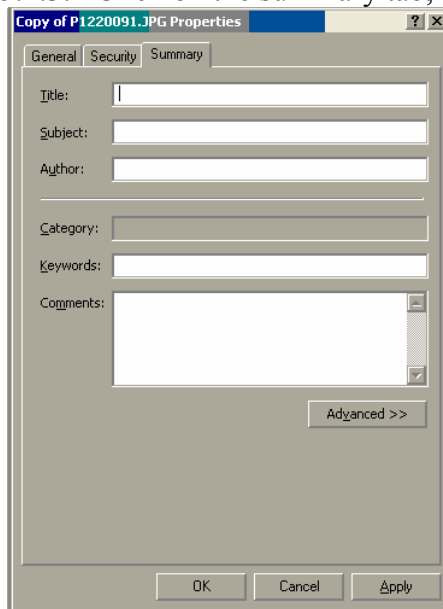
5.1. Check the aspect ratio of your pictures

5.1.1. Within Windows Explorer, navigate to the folder where your original pictures are stored.

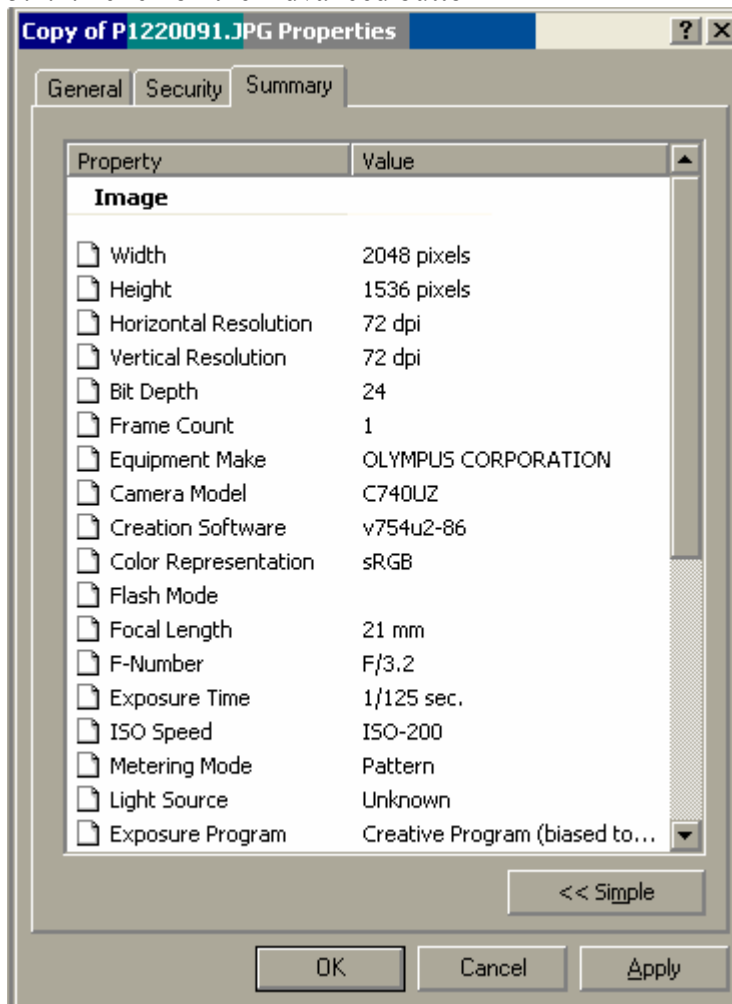


5.1.2. Right-click on any one of the landscape pictures and choose Properties from the pop-up dialog

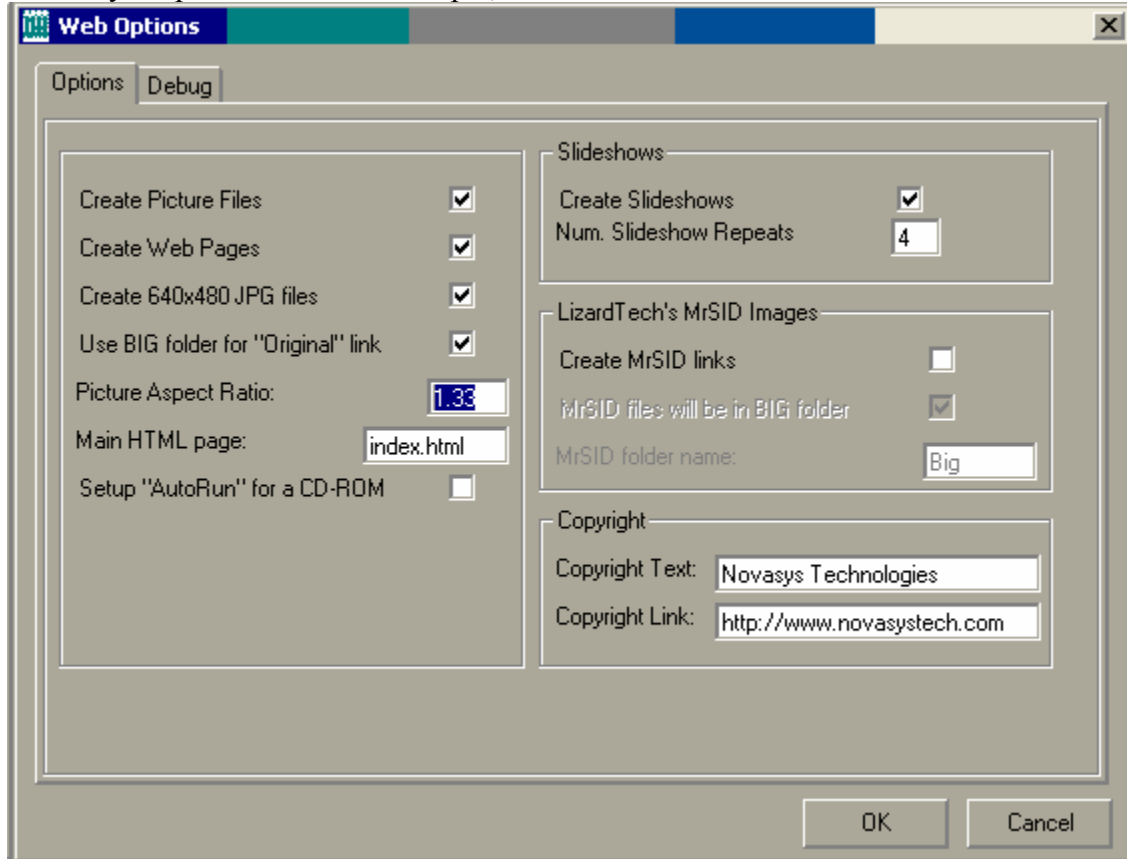
5.1.3. Click on the summary tab,



5.1.4. click on the Advanced button



5.1.7. Change the value in the “Picture Aspect Ratio” textbox to the aspect ratio of your pictures. In this example, 1.33



5.1.8. Click OK

5.2. Click “Create Web”